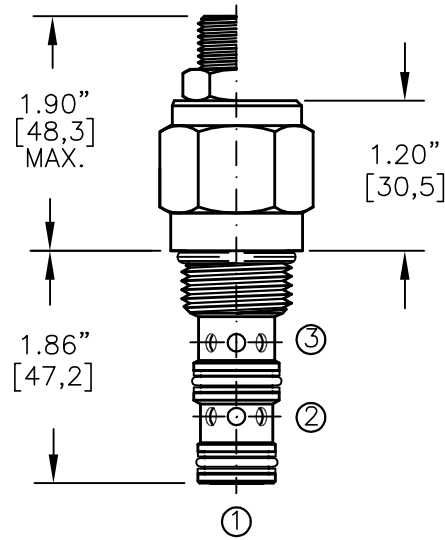
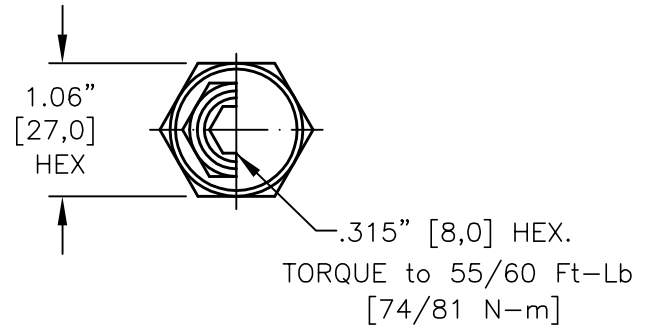
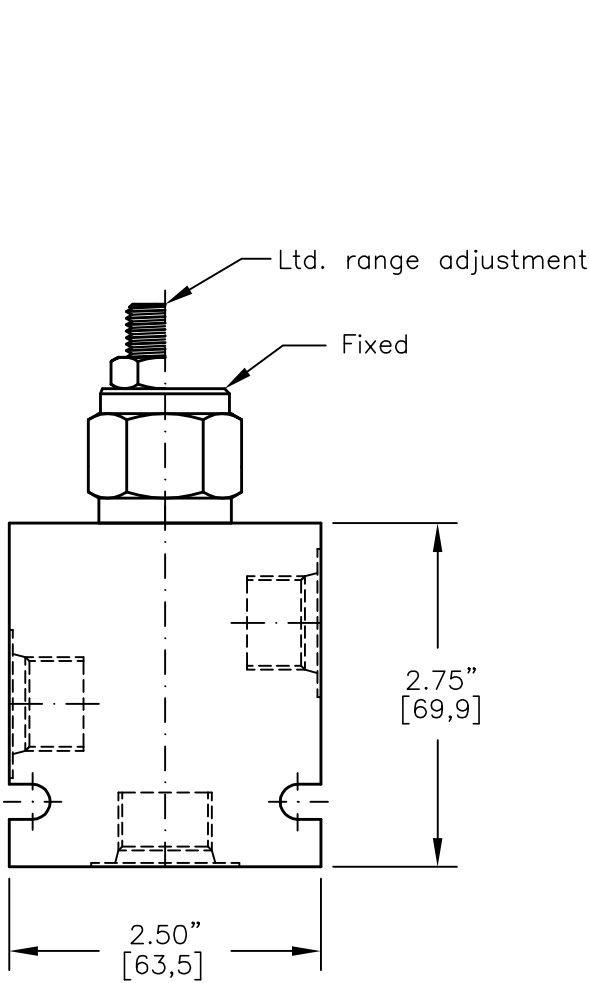
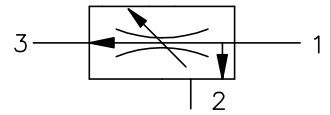




FLOW CONTROL VALVE PRESSURE COMPENSATED, FIXED ORIFICE, PRIORITY TYPE.



FOR ALUMINUM OR STEEL VALVE HOUSING CONFIGURATIONS SEE PAGE 0-032.1

BFCV-10-X-X-X-XX

BASIC

SIZE
10 = 7/8"-14 UNF

SEALS
N = BUNA "N"
V = VITON

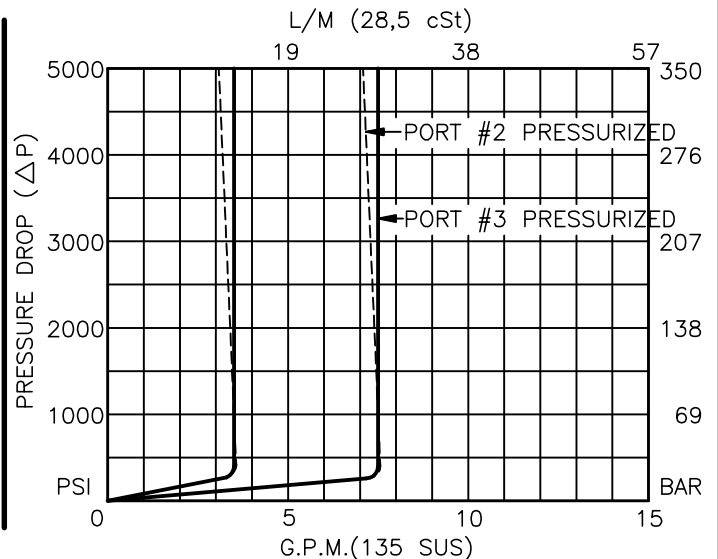
ADJUSTMENT
F = FIXED (FACTORY SET)
S = ADJUSTING SCREW
C = CAPPED
T = TAMPERPROOF
K = HANDKNOB
M = METAL HANDKNOB

FOR ADJUSTMENT CONTROL
OPTIONS SEE PAGE 0-050.0

REGULATED FLOW
TO BE SPECIFIED
EXAMPLE
1.5=1.5 GPM (5,7l/m)

PORTS
0 = CARTRIDGE ONLY
02BX = G 1/4" BSPP
03BX = G 3/8" BSPP
06TX = SAE - #6
08TX = SAE - #8

"A" - ALUM. HOUSING
"S" - STEEL HOUSING





**FLOW CONTROL VALVE PRESSURE COMPENSATED,
FIXED ORIFICE, PRIORITY TYPE.**

DESCRIPTION – FIXED

This unit is a SCREW IN, cartridge type, pressure compensated, fixed orifice, priority type hydraulic flow control valve.

FLOW RANGE: 0.2 TO 8.0 GPM [0,8 TO 30,0 L\M]

DESCRIPTION – ADJUSTABLE

This unit is a SCREW IN, cartridge type, pressure compensated, fixed orifice, 30% flow adjustment, priority type hydraulic flow control valve.

FLOW RANGE: 0.2 TO 12.0 GPM [0,8 TO 45,0 L\M]

Flow adjustment under pressure is difficult.

OPERATIONS

Valve maintains constant flow from port 1 to 3 regardless of system pressure or load and excess flow is diverted to port 2. Flow from port 3 goes thru the control orifice to port 1 at non-compensated flow.

FEATURES AND BENEFITS

Valve is available with a screw, tamperproof, capped or knob adjustment. All external carbon steel parts are plated for longer life against the elements. All cartridge valves are 100% functionally tested. Industry common cavity.

SPECIFICATIONS

OPERATING PRESSURE: 5,000 PSI (350 Bar)

PROOF PRESSURE: 10,000 PSI (700 Bar)

FLOW: 0.2 to 12.0 GPM [0,8 to 45,0 l/m] nominal. See performance chart.

FLOW ACCURACY:

0.2 to 1.5 GPM [0,9 to 6,0 L\M] = +\ - 10.0%

1.5 to 4.0 GPM [6,0 to 15,0 L\M] = +\ - 7.5%

4.0 to 12.0 GPM [15,0 to 45,0 L\M] = =\ - 5.0%

VALVE HOUSINGS: 2500 PSI [175 Bar] = Aluminum - Anodized.

5000 PSI [350 Bar] = Steel - Unplated.

OPERATING TEMPERATURE: -40° to +250° F. [-40° to +120° C.]

OPERATING MEDIA: All general purpose hydraulic fluids such as MIL-H-5606, SAE-#10, SAE-#20, etc.

INSTALLATION: No restrictions.

SEAL KIT: SKN-1030 Buna "N".

SKV-1030 Viton.

WEIGHT: .42 lb [.19 kg] cartridge only.

VALVE CAVITY: #C1030, See Page 0-032.0.